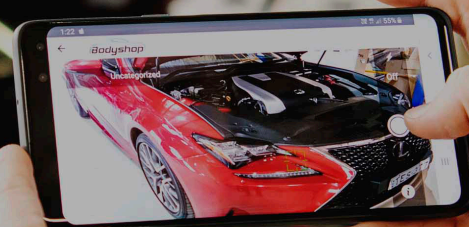


LSR ONLINE QUOTING

PHOTO GUIDE



1. VEHICLE OVERVIEW (INCLUDING BADGES)

PLEASE NOTE: HEIGHT OF CAMERA SHOULD BE HORIZONTAL TO THE DAMAGE OR PANEL

IMAGE CAPTURE POINTS FRONT

APPLY THE SAME FOR REAR

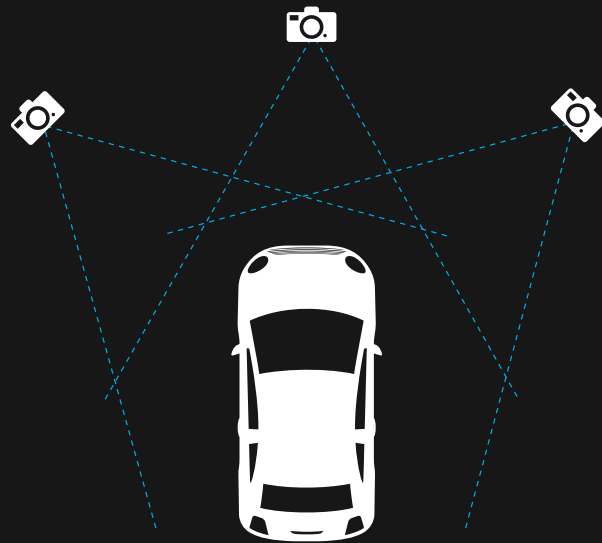
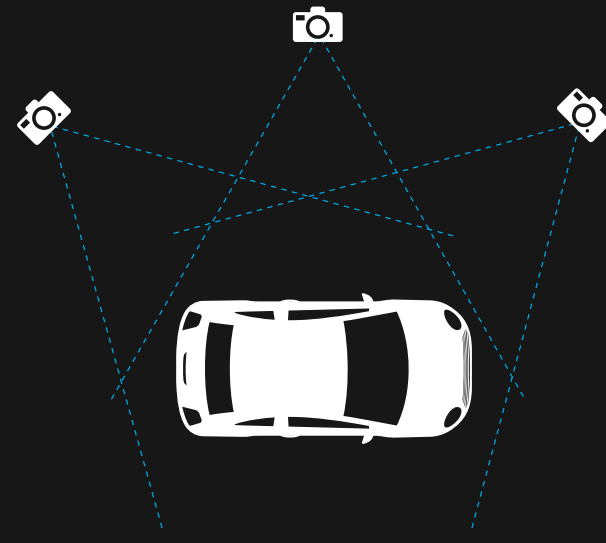


IMAGE CAPTURE POINTS SIDE



2. REGISTRATION PLATE

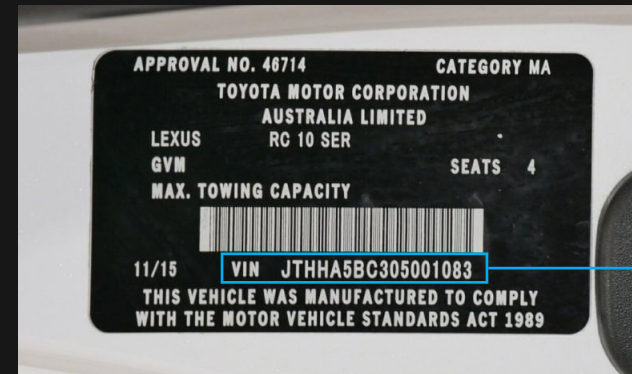


3. ODOMETER

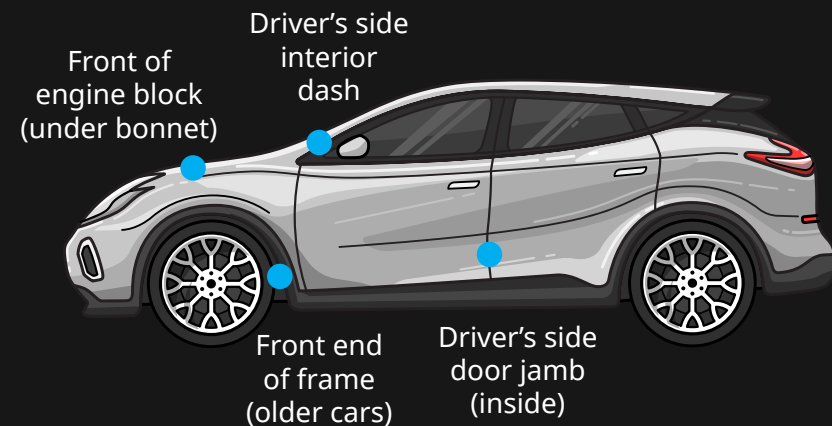


4. COMPLIANCE PLATE WITH VIN

This is a plate containing the 17 character Vehicle Identification Number (VIN) which is displayed on the registration certificate. It can also be found on the vehicle itself, either on the compliance plate located in the engine bay or on one of the door posts (where the door latches when it is closed), or on the passenger side windshield.



Example of a VIN

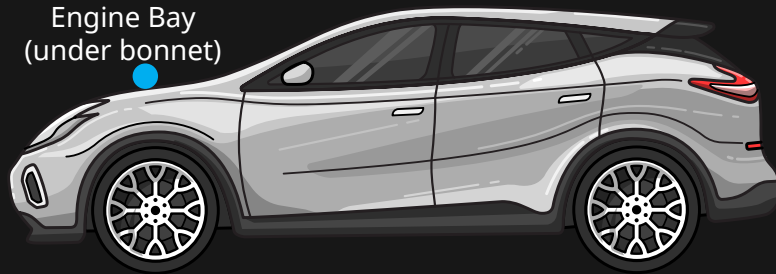


5. BUILD PLATE

This is fixed to your car when it is first assembled and it can usually be found on the firewall in the engine bay. This is not the same as a compliance plate. To help differentiate the two plates, its handy to remember that a compliance plate will include the words "manufactured to comply with".



Engine Bay
(under bonnet)



6. DAMAGE DETAIL

In addition to the general photos please take close-up images of the damage.



Good images will result in a better & quicker estimation, including assessment by the Insurer if needs be.

Please look at the images before you send them and if you can't see the damage, neither will we!